

Inset LED light Type IL20D ZHR

These full flat inset lights have been developed for the demanding use in the landing area. They are mainly used for approaches, offset thresholds and ends of stop lanes or safety areas on runways. The ICAO requirements for aircraft movements under Cat. I to III visibility conditions are met by one single beacon per light point.

The IL20D light consists of a lamp housing and a grooved plate, both made of tempered aluminium alloy. A frame made of Inox V4A is used for permanent anchoring in the moving surface.

The IL20D is controlled by constant input voltage with PowerLineControl PLC.

Lights with PLC are controlled and monitored via the lighting bus system BBS. The light intensity is programmed according to the specifications, and operating data from the light is continuously transmitted to the BBS.

Technical data

Casing	Aluminium casting	
Protection	IP 68	
Weight	9.0 kg lamp casing 18.5 kg shallow base short 26.0 kg shallow base long 14.5 kg grooved plate short 26.5 kg grooved plate long	
Source of light	LED	
Prisms	Borsilicate	
Temperature	-25°C to +70°C	
Tension	48V AC max.	
Power Pmax.		55W
	APH white	50W
	ASR red	15W
	RETIL yellow	14W
	REX yellow	10W
	REX green	20W
	RWE red	20W
	TDZ white	50W
	THR green	
Light intensity		20'000 cd
	ASR red	11'500 cd
	RETIL yellow	5'000 cd
	REX yellow	1'600 cd
	REX green	1'600 cd
	RWE red	6'500 cd
	TDZ white	13'000 cd
	THR green	22'500 cd



Execution and Accessory

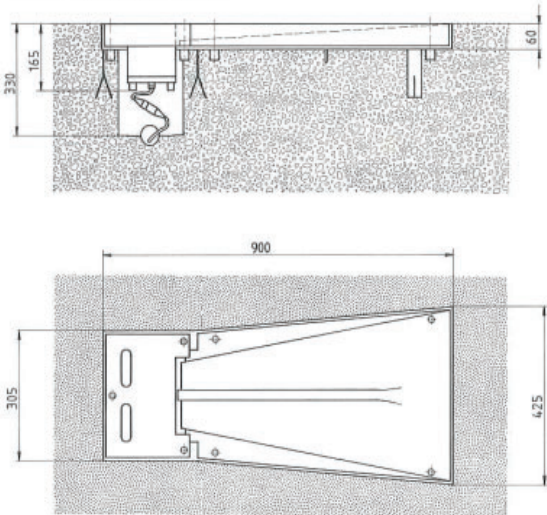
Other voltages	on request
Accessory	grooved plate short grooved plate long shallow base short shallow base long grooved plate heating short grooved plate heating long etc.

Order Information

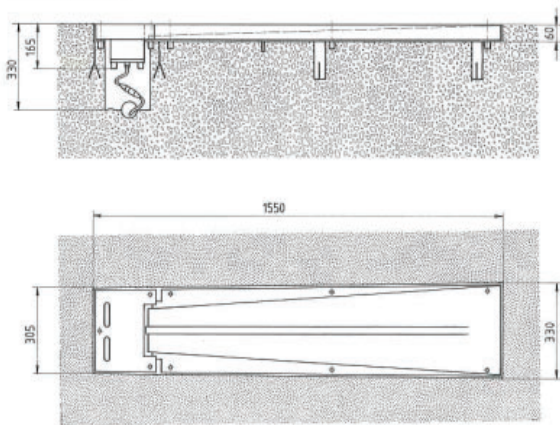
Order number	IL20D-aaa/ZHR-cc-P-C
Function (aaa)	APH approach center line and crossbars ASR approach side row THR threshold RETIL rapid exit taxiway indicator REX rapid exit RWE runway end TDZ touch down zone
Color code (cc)	WH white GN green RD red YE yellow
Type	P parallel system
Controls	C by PLC (BBS required)

Side view

IL 20-APH/ASR/THR



IL 20-RWE



Application example



Hugentobler Spezialleuchten AG

Brunnenwiesenstrasse 14

CH - 8570 Weinfelden

Tel. +41 71 626 20 40

info@spezialleuchten.ch

www.spezialleuchten.ch



Signalling and alarm lights



Special lights for aviation and navigation



Tunnel safety lights

Inset LED light Type IL20D ARMA

These full flat inset lights have been developed for the demanding use in the landing area. They are mainly used for approaches, offset thresholds and ends of stop lanes or safety areas on runways. The ICAO requirements for aircraft movements under Cat. I to III visibility conditions are met by one single beacon per light point.

The IL20D series light consists of a lamp housing and a grooved plate, both made of tempered aluminium alloy. A frame made of Inox V4A is used for permanent anchoring in the moving surface.

Thanks to the programmable power supply unit, the brightness levels can be adapted very flexibly to the customer's needs depending on the input voltage.



Execution and Accessory

Other voltages on request

Accessory grooved plate short
grooved plate long
shallow base short
shallow base long
grooved plate heating short
grooved plate heating long
etc.

Technical data

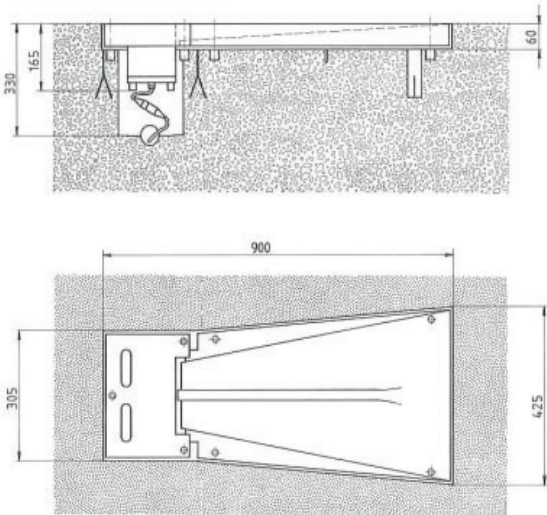
Casing	Aluminium casting	
Protection	IP 68	
Weight	9.0 kg lamp casing 18.5 kg shallow base short 26.0 kg shallow base long 14.5 kg grooved plate short 26.5 kg grooved plate long	
Source of light	LED	
Prisms	Borsilicate	
Temperature	-25°C to +70°C	
Tension	parallel system 9 - 48V AC max.	
Brightness levels	1%, 3%, 10%, 30%, 100%	
Power Pmax.	APH white	55W
	ASR red	50W
	RETIL yellow	15W
	REX yellow	14W
	REX green	10W
	RWE red	20W
	TDZ white	20W
	THR green	50W
Light intensity	APH white	39'800 cd
	ASR red	11'500 cd
	RETIL yellow	5'000 cd
	REX yellow	1'600 cd
	REX green	1'600 cd
	RWE red	6'500 cd
	TDZ white	13'000 cd
	THR green	22'500 cd

Order Information

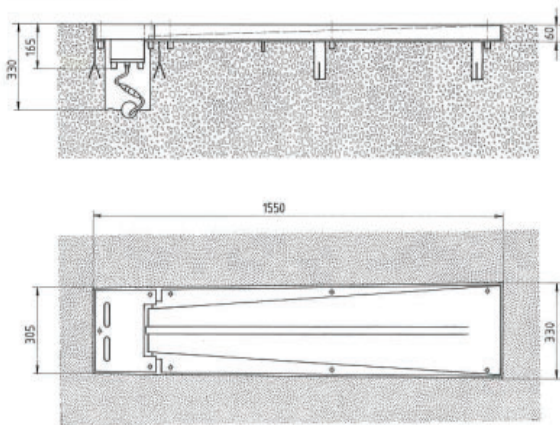
Order number	IL20D-aaa/ARMA-cc-P-0	
Function (aaa)	APH approach center line and crossbars ASR approach side row THR threshold RETIL rapid exit taxiway indicator REX rapid exit RWE runway end TDZ touch down zone	
Color code (cc)	WH	white
	GN	green
	RD	red
	YE	yellow
Type	P	parallel system
Controls	0	voltage controlled

Side view

IL 20-APH/ASR/THR



IL 20-RWE



Application example



Hugentobler Spezialleuchten AG

Brunnenwiesenstrasse 14

CH - 8570 Weinfelden

Tel. +41 71 626 20 40

info@spezialleuchten.ch

www.spezialleuchten.ch



Signalling and alarm lights



Special lights for aviation and navigation



Tunnel safety lights