

# LED light

## Type IL554D Vers.2

Series 554D LED lights are suitable for use as TLOF, Flight Path Alignment Guidance and Aim Point lights on heliports and landing pads on the ground. Due to its very compact design it can be optimally integrated into the platform construction or mounted in concrete or blacktop using a shallow base.

They are characterised by low energy consumption and greatly reduced maintenance frequency. The lifespan of the LEDs is well over 100'000 hours under normal operating conditions.

Optionally, the light can be supplemented with an infrared LED, which makes it suitable for night vision devices (NVG).

There is a choice of two designs:

1. Full-Flush (ff): completely embedded in the ground and therefore suitable for snow clearing. Limited omnidirectional distribution.
2. Semi-Flush (sf): above ground, omnidirectional and ICAO-compliant.

### Technical Data

<b>Casing</b>	Aluminium
<b>Glasses</b>	casting compound
<b>Protection</b>	IP 68
<b>Weight</b>	0.63kg
<b>Source of light</b>	LED
<b>Light color</b>	green/white as per ICAO Annex 14 Volume II Heliports)
<b>Temperature</b>	-40°C to +55°C
<b>Voltage</b>	24V DC (operational range 18 to 30V DC)
<b>Mounting</b>	using 4x M5 countersunk screws
<b>Connection</b>	using connection box
<b>Connecting cable</b>	silicone cable 3 x 0.5mm <sup>2</sup> 1 = +24V, 2 = GND, 3 = Dimming
<b>Dimming</b>	0% to 100% dimmable



### Power input

	<b>6W(green)</b>	<b>7.2W(white)</b>	<b>0.3W(IR)</b>
24V DC	250mA	300mA	13mA

### Ausführungen und Accessory

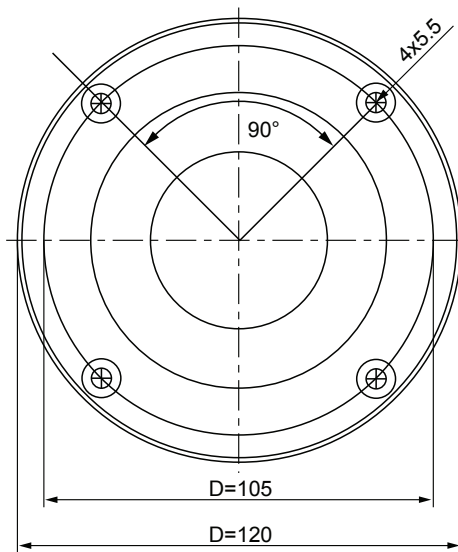
<b>Outer glass (LED)</b>	casting compound
<b>Options</b>	IR portion floor mounting shallow base connection box

### Order Information

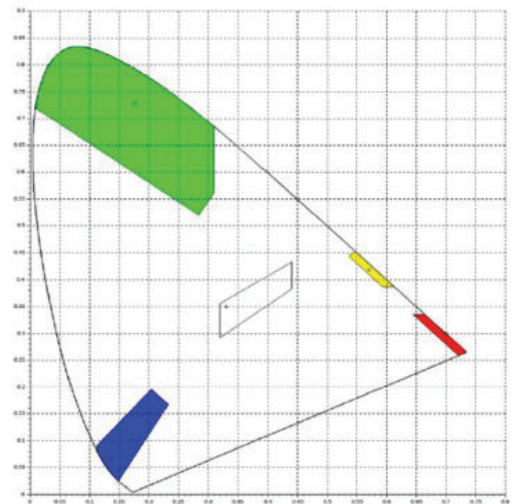
<b>Order number</b>	IL554D-TLOF-vv-uuu-c-taa
<b>Version (vv)</b>	ff full flat sf omnidirectional (ICAO)
<b>Voltage (uuu)</b>	024 24V DC,
<b>Light color (c)</b>	g green (TLOF) w white (FATO Aim Point etc.)
<b>Suitability (taa)</b>	NVG suitable for night vision devices 000 not suitable for night vision devices

## Both designs

Top view

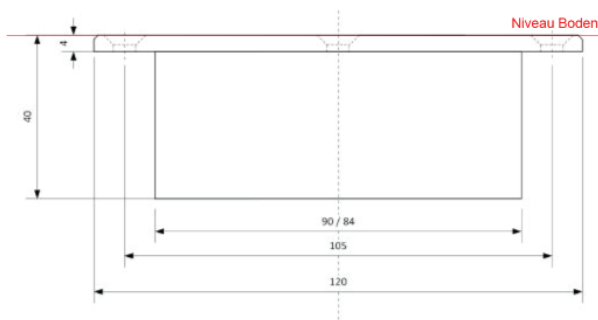


Colour place

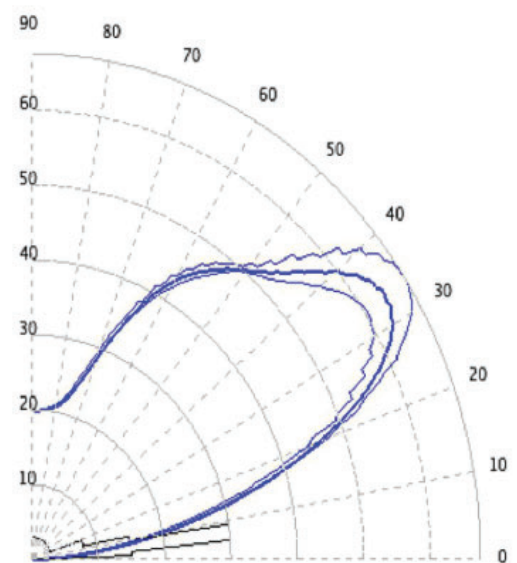


## Full-Flush design (suitable for snow clearance)

Side view

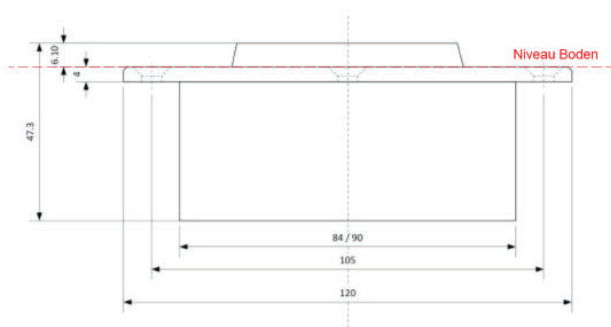


Light distribution (TLOF)

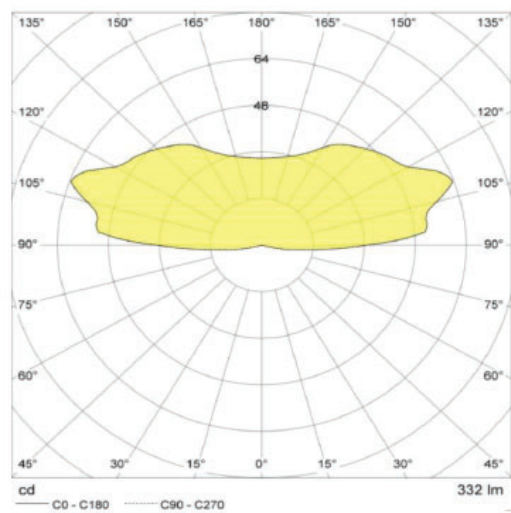


## Semi-Flush design (ICAO)

Side view



Light distribution (TLOF)





**Hugentobler Spezialleuchten AG**

**Brunnenwiesenstrasse 14**

**CH - 8570 Weinfelden**

**Tel. +41 71 626 20 40**

**[info@spezialleuchten.ch](mailto:info@spezialleuchten.ch)**

**[www.spezialleuchten.ch](http://www.spezialleuchten.ch)**



**Signalling and alarm lights**



**Special lights for aviation and navigation**



**Tunnel safety lights**