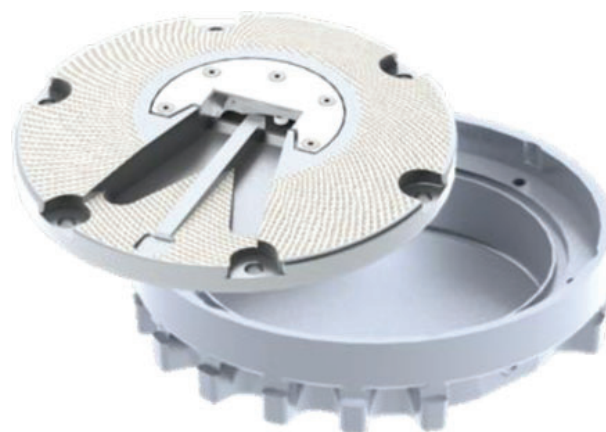


# Road marking light

## Type IL347 LED

The mechanical design of the IL347 is robust enough to withstand high loads. The LED beacon is specially designed for road traffic with a low overheight to the road surface and very good mechanical protection of the light exit.

The light can be delivered with a built-in switch to change light colors (red/green).



### Technical Data

<b>Casing</b>	Aluminium casting cover plate made of tempered steel
<b>Protection</b>	IP 68
<b>Weight</b>	3.7kg
<b>Source of light</b>	LED 2x max. 7W (red / green) LED 2x max. 7W (red / blue) LED 4x max. 7W (yellow)
<b>Temperature</b>	-40°C to +70°C
<b>Humidity</b>	10% to 95% non-condensing
<b>Prism</b>	Borosilicate
<b>Shallow base</b>	Aluminium
<b>Voltage</b>	15 - 35V DC max.

### Power input

	Type P	Type S
24V DC	0.300A	0.300A

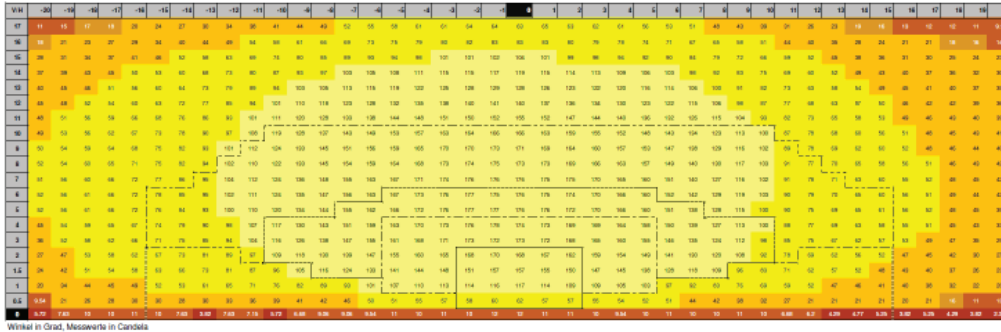
### Execution and Accessory

<b>Other voltages</b>	on request
<b>LED</b>	red / green
<b>Options</b>	dimmable via 0-10VDC (0V = 100%) dimmable by software shallow base to IL347D switching via parking sensor parking sensor

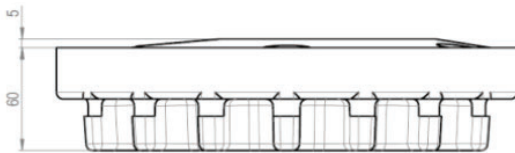
### Order Information

<b>Order number</b>	IL347D-a-cc-b
<b>Execution (a)</b>	P parking version S street version
<b>Color code (cc)</b>	RG red / green RB red / blue Y yellow
<b>Option (b)</b>	0 without A dimmable 0-10V DC S interface RS485 S1 for sensor signal 0/1

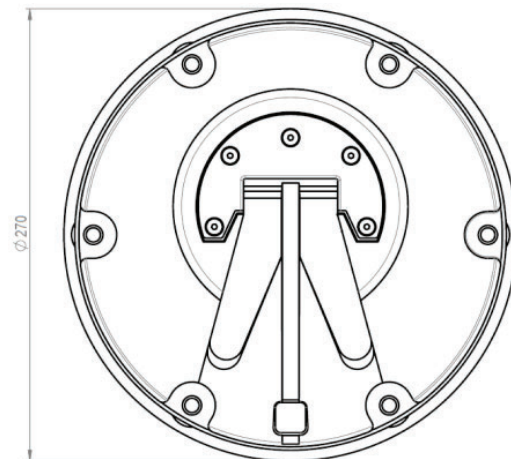
## Typical light distribution



Side view



Top view



**Hugentobler Spezialleuchten AG**

Brunnenwiesenstrasse 14

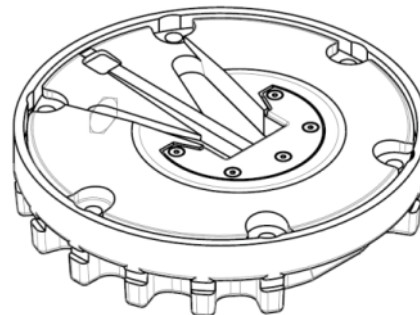
CH - 8570 Weinfelden

Tel. +41 71 626 20 40

info@spezialleuchten.ch

www.spezialleuchten.ch

3D view



Signalling and alarm lights



Special lights for aviation and navigation



Tunnel safety lights