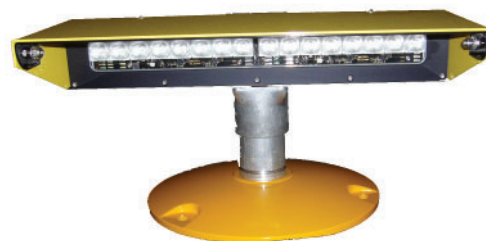


# Floodlight Type EL527D

Series 527D LED lights are placed above ground and are suitable for use as floodlights on heliports and helipads. Due to their very compact design, they can be optimally integrated into the supporting structure of the platform without weakening the latter.

Due to its low height of only 158mm, the floodlight does not represent an obstacle on the platform according to ICAO (Annex 14 Volume II Heliports).

LED lights are characterised by their low energy consumption and the resulting considerably reduced maintenance frequency. The lifespan of the LEDs is well over 70'000 hours under normal operating conditions. The light is mounted on a breaking clutch.



## Technical Data

<b>Casing</b>	Aluminium casting
<b>Glasses</b>	Borosilicate
<b>Weight</b>	6.2kg incl. base plate
<b>Source of light</b>	LED
<b>Protection</b>	IP 67
<b>Connecting cable</b>	silicone cable 2 x 0,75mm <sup>2</sup> / 0,4m
<b>Connection</b>	using Steab connection box
<b>Mounting</b>	using 3x M10 anchor bolts or 3x M10 screws
<b>Temperature</b>	-25°C to +60°C
<b>Voltage</b>	24V DC (operational range 20 to 28V DC)

## Power input

	<b>41W</b>
24VDC	1.7A

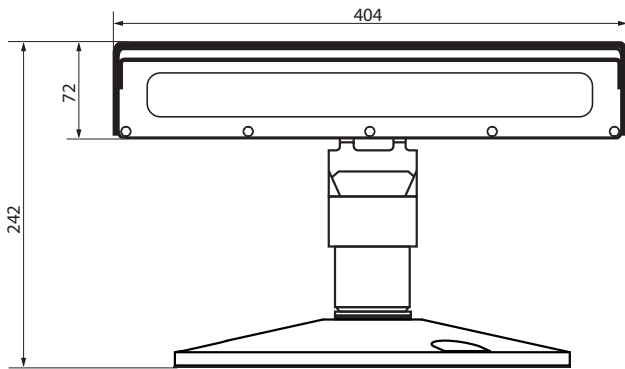
## Execution and Accessory

<b>Outer glass (LED)</b>	Borosilicate
<b>Options</b>	Power supply 230V AC Connection box Steab
<b>Approvals</b>	ICAO Annex 14 Vol. 2 Heliports, 4. Edition BAZL AD I-012D ICAO Annex 14 Vol. 1 Aerodrome Design and Operation ICAO DOC 9261 Heliport Manual ICAO DOC 9157 Aerodrome Design Manual Part 6 (Frangibility)

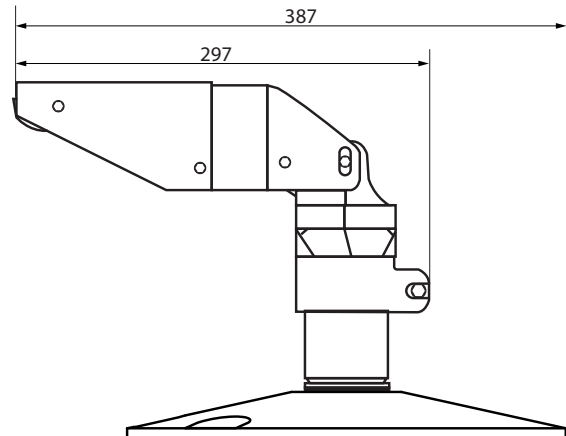
## Order Information

<b>Order number</b>	LD527D-a-uuu-pp-cc
<b>Beam angle (a)</b>	F Flood
<b>Voltage (uuu)</b>	024 24V DC,
<b>Performance (pp)</b>	41W LED
<b>Light color (cc)</b>	ws white

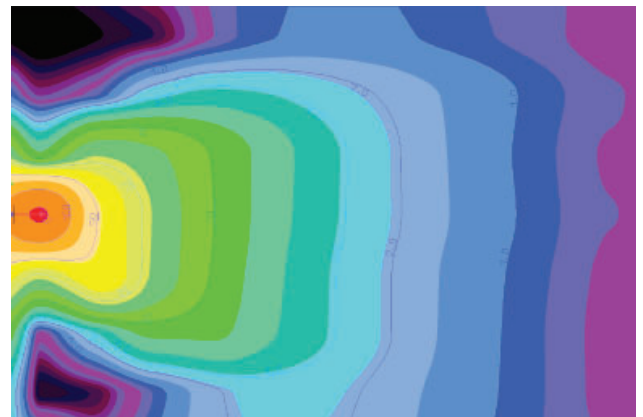
**Front view**



**Side view**



**Light distribution**



**Hugentobler Spezialleuchten AG**

**Brunnenwiesenstrasse 14**

**CH - 8570 Weinfelden**

**Tel. +41 71 626 20 40**

**info@spezialleuchten.ch**

**www.spezialleuchten.ch**



**Signalling and alarm lights**



**Special lights for aviation and navigation**



**Tunnel safety lights**