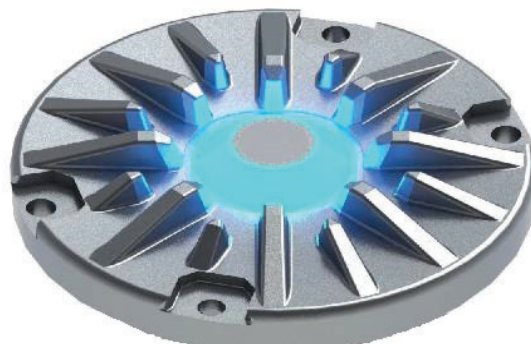


Inset LED light Type IL254D

These inset lights were developed for demanding use along the runway. The ribs prevent mechanical damage to the optics by vehicles and snow clearing equipment. An optical alignment after maintenance is not necessary.

Thanks to the programmable power supply unit, the brightness levels can be adapted very flexibly to the customer's needs depending on the input voltage.



Technical data

Casing	Aluminium casting	
Protection	IP 68	
Weight	2.2 kg lamp casing 1.6 kg power supply	
Source of light	LED	
Temperature	-25°C to +70°C	
Prisms	Borsilicate	
Tension	parallel circuit 10.5 - 48V AC max.	
Brightness levels	1%, 3%, 10%, 30%, 100%	
Power Pmax.	APL white	18W
	TEL blue	14W
Light intensity	APL white	20.0 cd
	TEL blue	10.5 cd

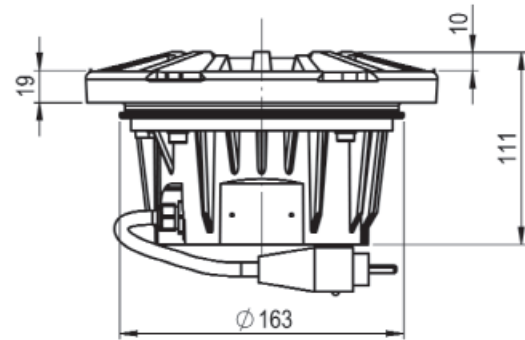
Execution and Accessory

Other voltages	on request
Accessory	shallow base 8" blind cover 8"

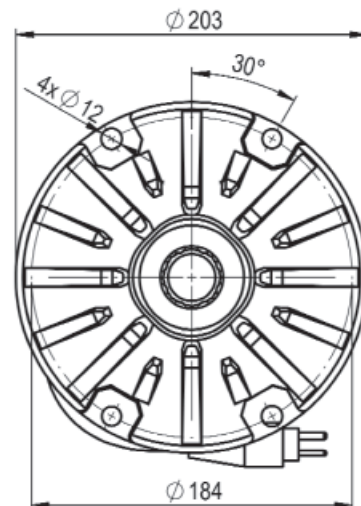
Order Information

Order number	IL254D-aaa-c-P-0
Function (aaa)	TEL taxiway edge APL approach (low intensity)
Color code (c)	B blue W white
Type	P parallel circuit
Controls	0 voltage controlled

Side view



Top view



Hugentobler Spezialleuchten AG

Brunnenwiesenstrasse 14

CH - 8570 Weinfelden

Tel. +41 71 626 20 40

info@spezialleuchten.ch

www.spezialleuchten.ch



Signalling and alarm lights



Special lights for aviation and navigation



Tunnel safety lights